

# Cey-Nor

*Trusted Partners*

PRODUCTS CATALOGUE-2011



## Cey-Nor Foundation Limited

Sri Lanka

ESTABLISHED IN 1967

# Cey-Nor

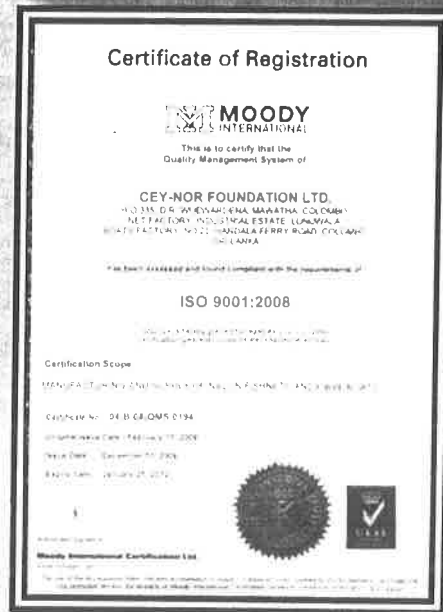
Trusted Partners

## How We Build

Quality, Safe & Efficient Boats to Fulfill Your Requirements.

Our Forte is to give you the best at a reasonable price.

You can relax when you rely on cey-nor products.



Specialized in Fiberglass Manual Hand lay – up Lamination, Cey-nor produces variety of Safe, Efficient, Quality and necessarily cost effective Boats. Cey-Nor's Quality Policy is to " Develop a product that exceeds the expectations of the real user ". CEY- NOR focuses on satisfying its diverse customer base through timely product development backed –up with innovative technology.

In this "Product Catalogue – 2011 " there are Variety of innovative products that meet with your requirements.

Visit our Web site: [www.ceynor.com](http://www.ceynor.com) for more information.

Rely on "CEY-NOR" Boats

# LONG LINERS (VS SERIES)

CEYNOR - KIO



## Latest Design Specifications

V. Shape Chine Hull

Length Overall : 15.08m (49.5ft)

Beam : 5.03m (16.5ft)

Draught : 1.8m (6.0ft)

Fish Hold : 29m<sup>3</sup>

Fuel : 9000 liter

Fresh Water : 2500 liter

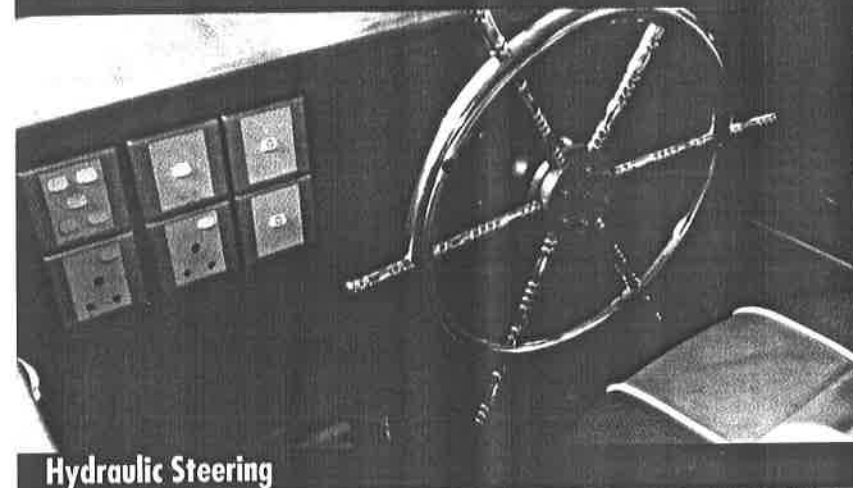
Recommended Engine : 250-350 hp

\*Other sizes available

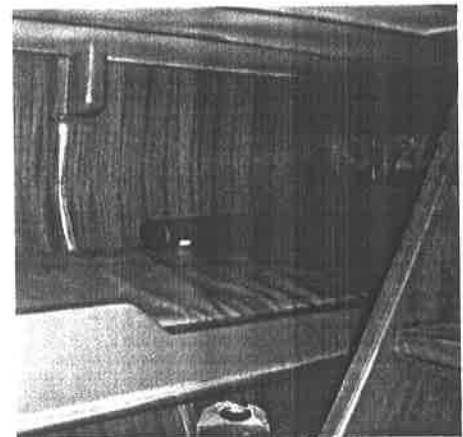
Overall Length : 16.35m (53.66ft)

Overall Length : 17.45m (57.25ft)

Interior Arrangements : Long Liner 15.08m (49.5ft)



Hydraulic Steering



## Specifications

Length Overall : 13.00 m

Beam : 4.40 m

Draught : 1.70 m

Fish Hold Capacity : 15 m<sup>3</sup>

Bait Hold Capacity : 2.00 m<sup>2</sup>

Fuel : 6000 liters

Fresh Water : 2000 liters

Recommended Engine : 160-250 hp

CEYNOR - RIO



It's **RELIABILITY** that matters.

Rely on "CEY-NOR" Boats

### CEYNOR - SASHIMI



*Innovative Sashimi Boat that operates on engine and sails*

#### Specifications

|                      |            |
|----------------------|------------|
| Length Overall       | 13.8 mt    |
| Beam                 | 5.0 mt     |
| Draught at DWL       | 1.2 mt     |
| Fuel Capacity        | 2,400 Ltrs |
| Fresh Water Capacity | 1,500 Ltrs |
| Recommended Engine   | 85 hp      |
| Hydraulic Steering   |            |

## TRADITIONAL FISHING TRAWLERS TRD SERIES

#### Specifications

|                             |                    |
|-----------------------------|--------------------|
| Length Overall              | 30'                |
| Displacement - Loaded       | 6 mt               |
| Breadth at mid              | 9'6"               |
| Draught at D.W.L.           | 3'0"               |
| Fuel Capacity               | 400 Ltrs           |
| Fresh Water capacity        | 100 Ltrs           |
| Speed                       | 8 knots            |
| Recommended Engine Capacity | 30-40 hp           |
| Engine with Manual Rudder   |                    |
| Fish Hold Capacity          | 3.25m <sup>3</sup> |

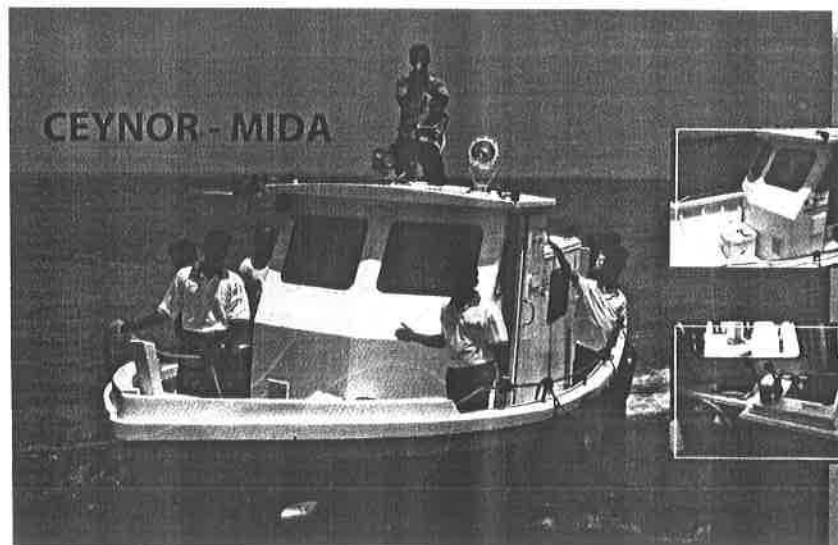
### CEYNOR - ALAN



#### Specifications

|                    |                      |
|--------------------|----------------------|
| Length Overall     | : 32' 3"             |
| Beam               | : 10' 2"             |
| Draught            | : 3'                 |
| Displacement       | : 6 Tone             |
| Fish Hold Capacity | : 6.7 m <sup>3</sup> |
| Fuel               | : 1200 liters        |
| Fresh Water        | : 350 liters         |
| Recommended Engine | : 40-70 hp           |

### CEYNOR - MIDA



CEY-NOR is with you from 1967

Rely on "CEY-NOR" Boats

## TRADITIONAL FISHING TRAWLERS

TRD SERIES

CEYNOR - ARIAN



### Specifications

|                      |                     |
|----------------------|---------------------|
| Bilge Hull           |                     |
| Length Overall       | 42'-0"              |
| Breadth of mid       | 12'-6"              |
| Draught at DWL       | 3'-9"               |
| Displacement Loaded  | 24 Mt               |
| Fuel Capacity        | 4,500 Ltrs          |
| Fresh Water Capacity | 1,500 Ltrs          |
| Speed - Light        | 8.5 knots           |
| Speed - Loaded       | 7 knots             |
| Recommended Engine   | 60-100 hp           |
| Fish Hold Capacity   | 16.5 m <sup>3</sup> |
| Hydraulic Steering   |                     |

## LEISURE CRAFTS

### Specifications

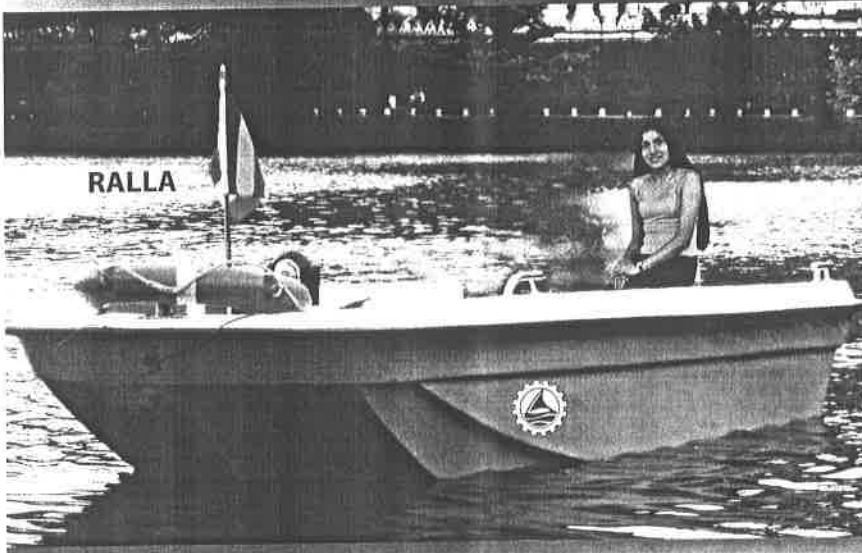
|                 |                   |
|-----------------|-------------------|
| Length Overall  | 4.07 mtrs         |
| Beam            | 1.66 mtrs         |
| Draught         | 0.15 mtrs         |
| Passengers      | 9 Nos             |
| Weight          | 750 kgs (Unladen) |
| Recommended OBM | 15-40 hp          |

### *Speed Leisure Craft*

### Specifications

|                |                    |
|----------------|--------------------|
| Length Overall | 7.25 mtrs (23'45") |
| Beam           | 2.24 mtrs (7'33")  |
| Depth          | 1.16 mtrs (3'75")  |
| Draught        | 0.60 mtrs (2'0")   |
| Passengers     | 10 Nos             |
| Weight         | 750 kgs (Unladen)  |
| Recommended    | OBM: 80-200 hp     |
| Maximum Speed  | 30knott            |

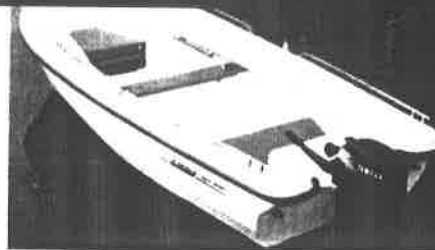
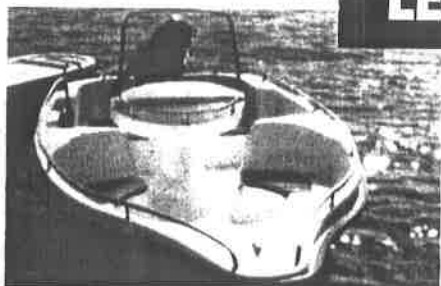
RALLA



BRAAVO



# EUROPEAN TYPE LEISURE CRAFTS



## Model : BRAMA

|                       |                 |
|-----------------------|-----------------|
| Length Overall        | 13'4"           |
| Type                  | Outboard Engine |
| Displacement - Loaded | 520 Kgs         |
| Breadth at mid        | 5'6"            |
| Steering System       | Hydraulic       |
| Recommended OBM       | 25 - 40 hp      |

## Model: AIBHA

|                       |                 |
|-----------------------|-----------------|
| Length Overall        | 15'33"          |
| Type                  | Outboard Engine |
| Displacement - Loaded | 630 Kgs         |
| Breadth at mid        | 6'0"            |
| Steering System       | Hydraulic       |

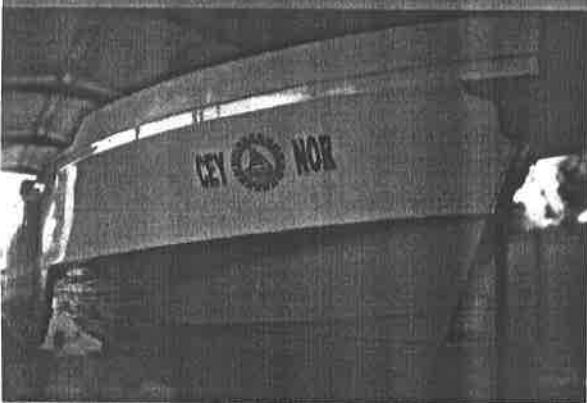
## Model : AGRAS

|                       |                 |
|-----------------------|-----------------|
| Length Overall        | 14'0"           |
| Type                  | Outboard Engine |
| Displacement - Loaded | 630 Kgs         |
| Breadth at mid        | 5'5"            |
| Recommended OBM       | 25 - 40 hp      |

**A CEY-NOR LEISURE BOAT** *Means highest performance.*

# PASSENGER BOATS

## CEYNOR - IJOY



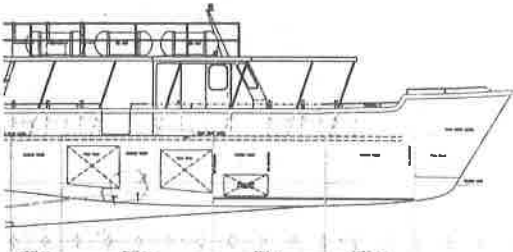
\*Have you ever thought of Whale Watching?  
CEYNOR TRI-MARAN Passenger Craft  
Can make your dream true.

# PEDAL BOATS

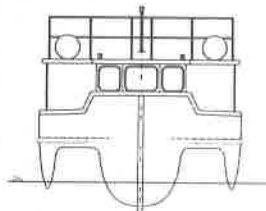


### Specifications:

|                             |           |
|-----------------------------|-----------|
| Length Overall              | 7'8"      |
| Width at mid                | 5'1"      |
| Depth at mid                | 11"       |
| Seating capacity            | 2 Persons |
| 2 buoyancy tanks (in-built) |           |



MAIN HULL SECTION: THROUGH CL

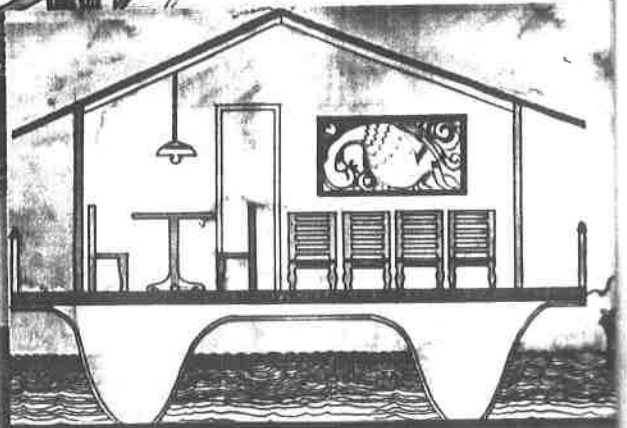
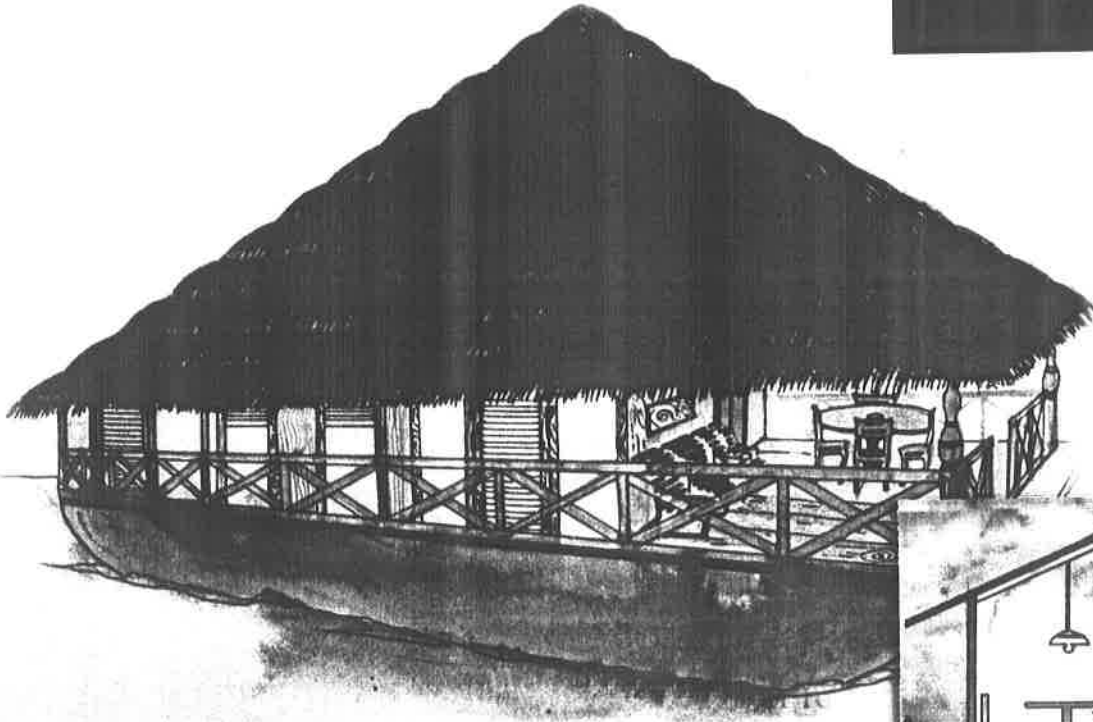


DECK PLAN

### Principal Dimensions

|                     |          |
|---------------------|----------|
| Length Overall      | 13.80m   |
| Maximum Beam        | 5.30m    |
| Draught             | 1.05m    |
| Main Hull Beam      | 2.30m    |
| Fuel                | 2000lts. |
| Water               | 1000lts. |
| Seating (main deck) | 42       |
| Seating (top deck)  | 18       |

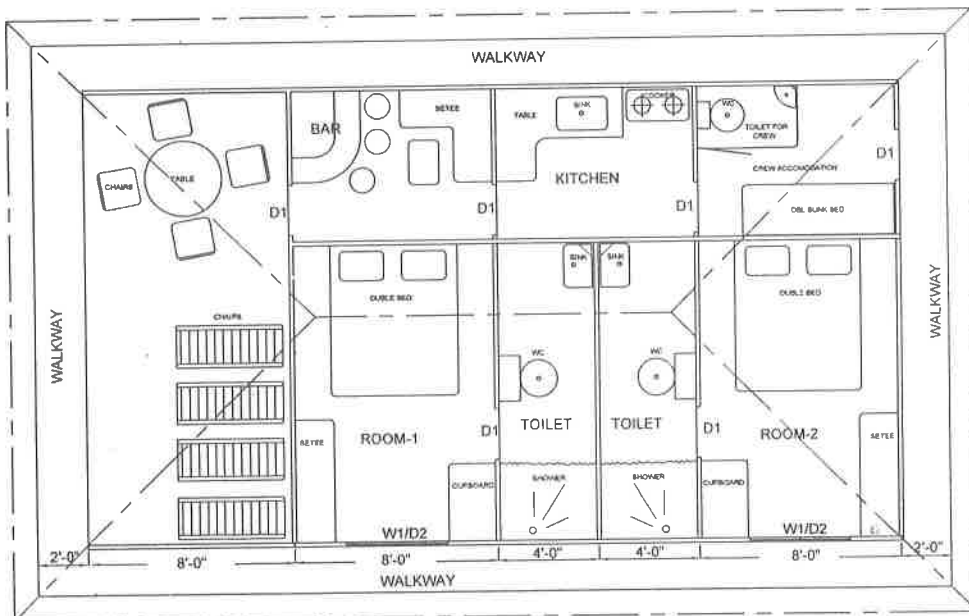
# HOUSE BOAT



Whenever you are free, **ISOLATE** and **REST** in a **CEY-NOR** House Boat and become a part of Nature

## FLOOR PLAN OF HOUSE BOAT

D1 - SLIDING DOOR  
W1 - WINDOW

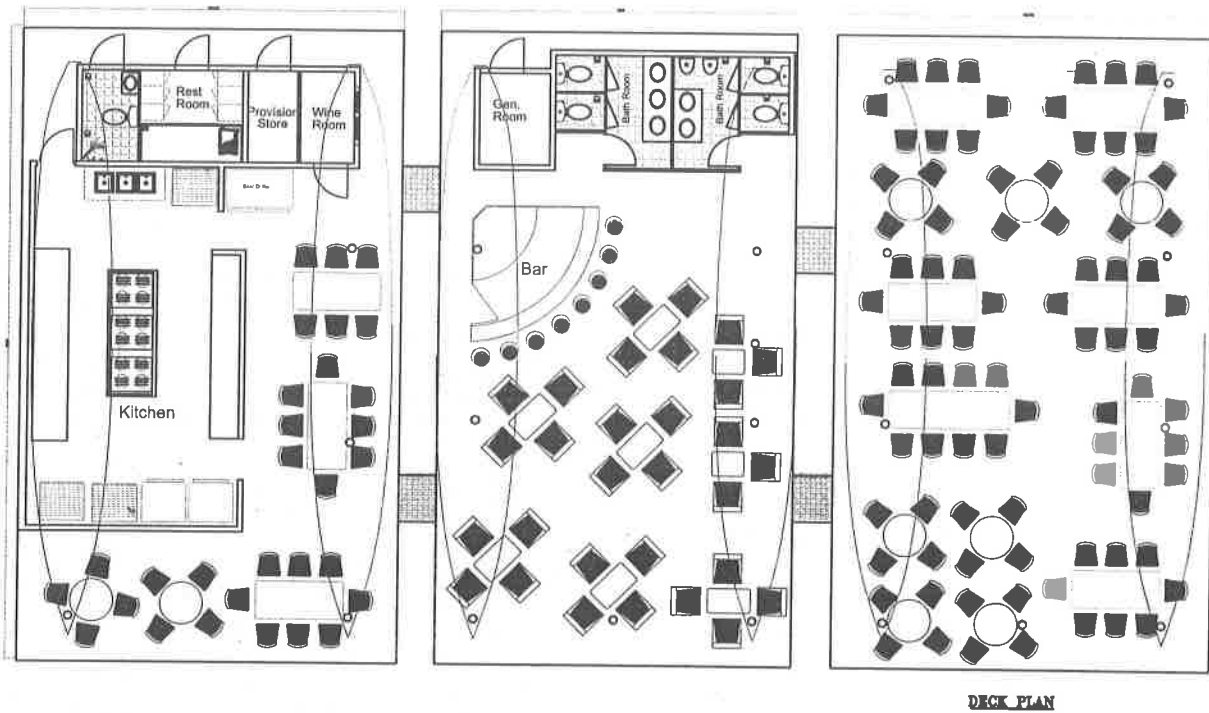
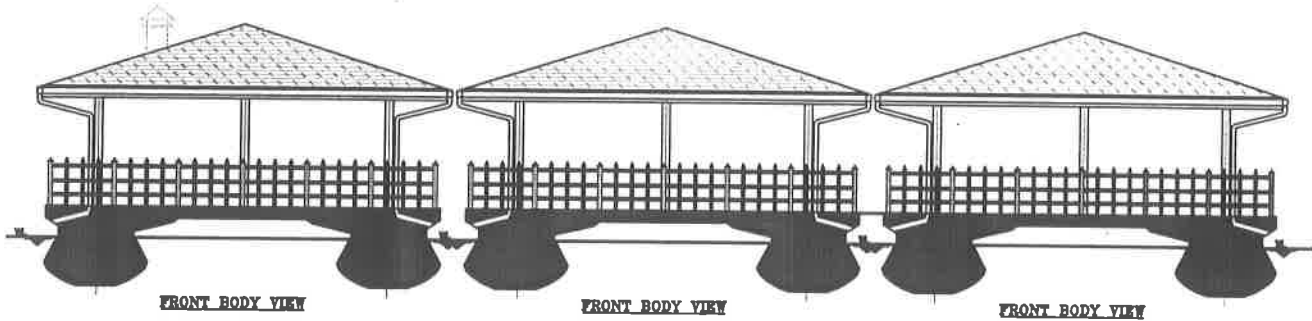


### DIMENSIONS

|        |                       |
|--------|-----------------------|
| LENGTH | - 36'-0"              |
| WIDTH  | - 18'-6"              |
| HEIGHT | - 12'-0"<br>(approx.) |
| ROOM   | - 12' X 8'            |

*Feel the Difference*

# FLOATING RESTAURANT PLAN



Persons to be entertained – 146. This Floating Restaurant is equipped with

- Kitchen,
- Rest Room,
- Bar and Toilets

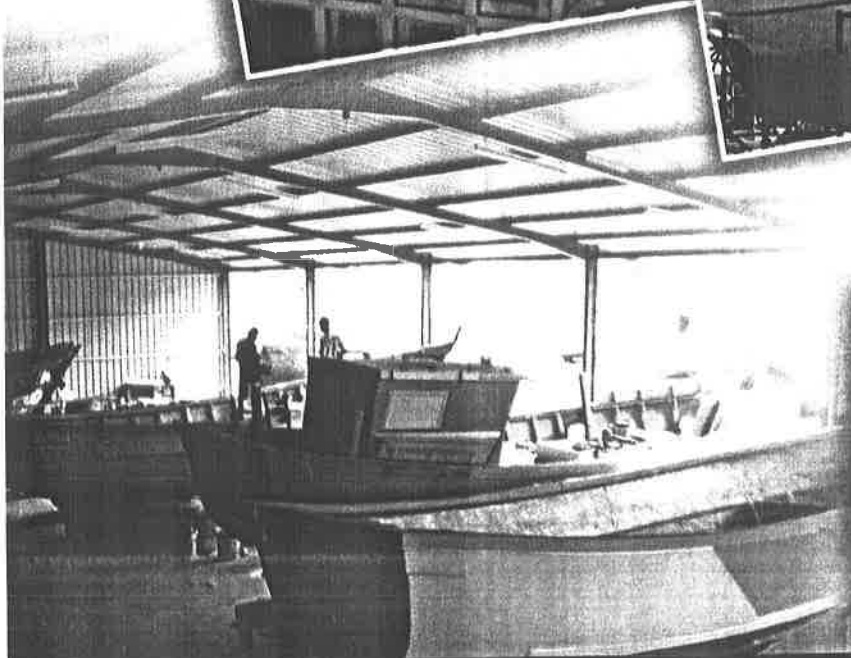
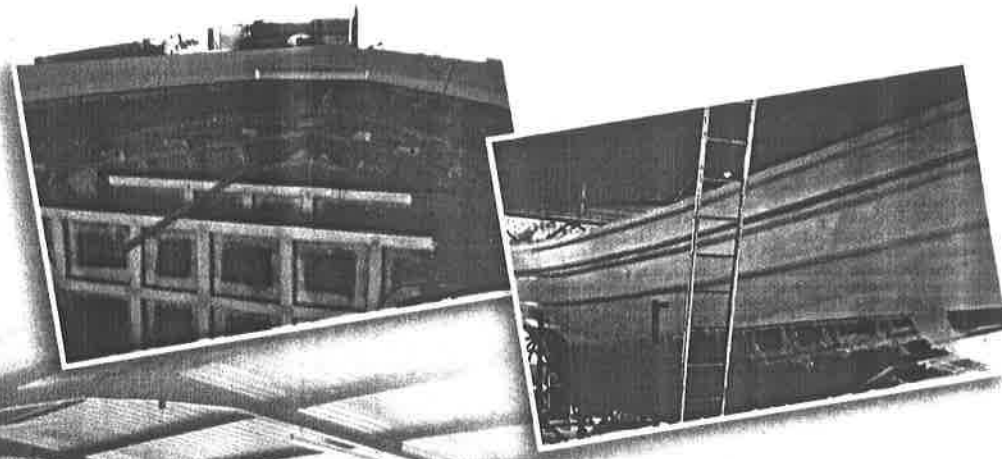
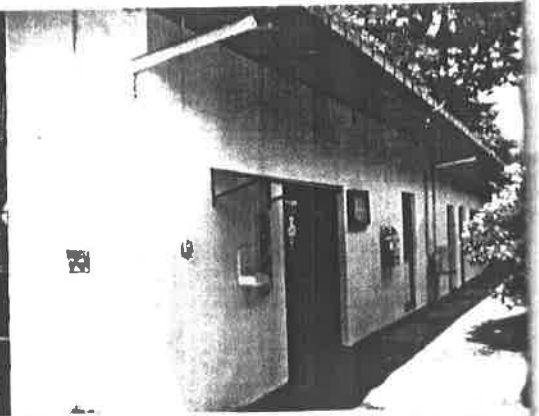
**Novel Concept - Novel experience**  
CEY – NOR FLOATING RESTAURANT



# PRODUCTION SITE

**Ceynor Boat yard**  
No. 25, Handala Ferry Road, Colombo 15.

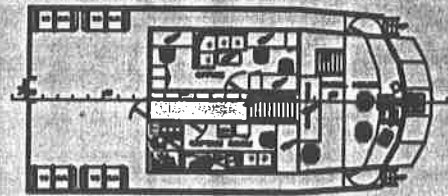
Our Production site is extended in three Acres of land, and roof area of 50,000 Sq. ft.  
It is also equipped with one acre launching site with roof area of 4,000 Sq.ft.



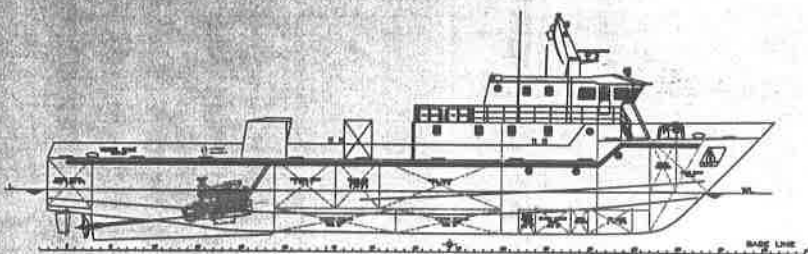
# EXPANSION PLAN

## Proposed Mother Vessel

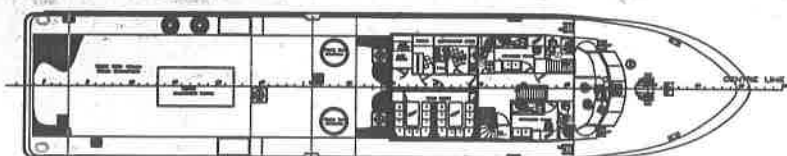
On completion of the International Standard Boat yard at a cost of US \$ 14 million, CEY-NOR will undertake construction of any type of boats up to 40m for international market. Under the Expansion Plan, ship repairs and training programmes upto "Master Builders Certificate" are in the offing.



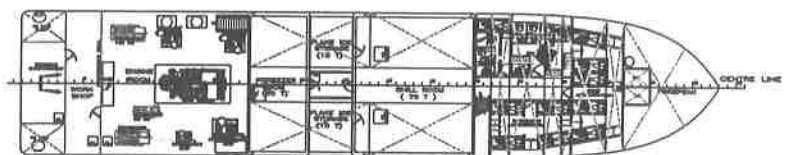
WHEEL HOUSE



PROFILE VIEW



DECK PLAN



UNDER DECK PLAN

### PARTICULARS

|                   |             |
|-------------------|-------------|
| LENGTH O.A. HULL  | 41.76 M     |
| LENGTH W.L.       | 37.80 M     |
| BREADTH           | 8.50 M      |
| DEPTH             | 4.50 M      |
| DRAFT (Apprx.)    | 2.50 M      |
| POWER             | 1875 HP     |
| TRIAL SPEED       | 12 KN       |
| CREW              | 18          |
| PASSENGERS        | 12          |
| FUEL              | 64.0 CU. M. |
| FRESH WATER       | 27.0 CU. M. |
| WORKING DECK AREA | 100 SQ. M.  |

| 18/10/2007   | FOR PROPOSED              | 1         | 1          |
|--|---------------------------|-----------|------------|
| DATE   | MODIFICATION / ALTERATION | Rev.      | By         |
| TITLE: GENERAL ARRANGEMENT PLAN<br>OF<br>FISH COLLECTOR MOTHER VESSEL  |                           |           |            |
| SERVICE  |                           |           |            |
| CONTRACTOR   |                           |           |            |
| CLASSIFICATION LR *100A1, LMC  |                           |           |            |
|  |                           | DESIGNED  | APPROVED   |
|  |                           | DRAWN     | PERM       |
|  |                           | CHECKED   | PERM       |
|  |                           | APPROVER  | PERM       |
|  |                           | DATE      | 18/10/2007 |
|  |                           | Scale     | 1:1        |
| This drawing and all information therein remain the sole property of BPP International PVT. Ltd. and is intended only as a technical drawing. No material liability shall be assumed by BPP International PVT. Ltd. in a third party without your written consent from BPP International PVT. Ltd. |                           | Drwg. No. | 1          |
|  |                           | Rev.      | 1          |
|  |                           | Page      | 1 of 1     |

**CEYNOR GROWTH FOR YOUR PROGRESS**

## CORPORATE INFORMATION

Name of Company : Cey Nor Foundation Limited  
Registered Office : No. 335 D.R. Wijewardena Mawatha, Colombo 10, Sri Lanka.  
Legal Form : A Limited Liability Company incorporated in Sri Lanka under the  
Companies Act No 17 of 1982 and Subsequently under the  
Companies Act No 7 of 2007



(A 100% Government owned Company)

## Cey- Nor Foundation Limited

# 335, D. R. Wijewardena Mawatha, Colombo 10, Sri Lanka.

Phone: + 94 112 448 040

e.mail : [info@ceynor.com](mailto:info@ceynor.com) Web site: [www.ceynor.com](http://www.ceynor.com)



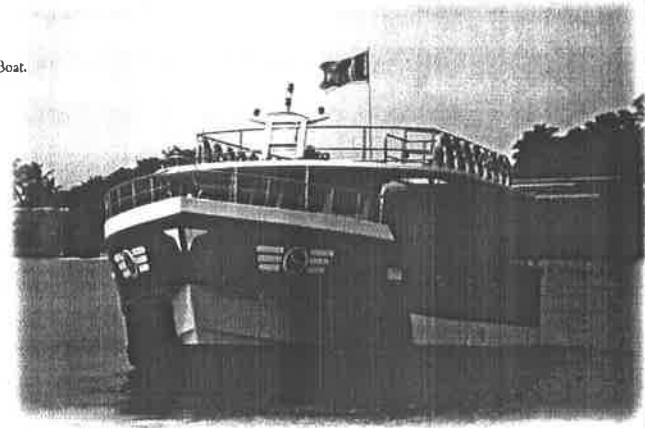
# සීමාසහිත සී-නෝර් පදනම வரையறுக்கப்பட்ட சீ-நோர் நிறுவனம் CEY-NOR FOUNDATION LTD.



(ධීවර හා ජලජ සම්පත් සංවර්ධන අමාත්‍යාංශය යටතේ ක්‍රියාත්මක වන ආයතනයකි)  
(கடற்றொழில் நிரியல் வளங்கள் அபிவிருத்தி அமைச்சின் கீம் செயற்படும நிறுவனம்)  
(Company functioning under the ministry of Fisheries and Aquatic Resources Development)

**50'** සීග්‍ර යාන/මහලු ධීවර යාන/මහලු වර්ග යාන  
பயணிகள்/வீதி/ மீன்பிடி/ மீன்பிடிப் படகுகள்  
Passenger Boat/ Sashmi Fishing Boat/ Whale watching Boat.

|                    |             |
|--------------------|-------------|
| Length             | -50' ft     |
| Beam               | -17'4" ft   |
| Draught            | -3'6" ft    |
| Breath at mid      | -9'6" ft    |
| Fish hold capacity | -35 tone    |
| Fuel               | -2,000 Ltrs |
| Fresh water        | -1,500 Ltrs |
| Recommended Engine | -85-250 Hp  |



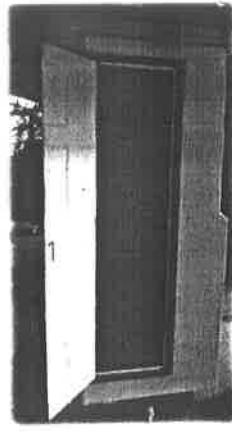
**55'** මහලු යාන  
அடி பல நாள் படகுகள்  
Multy day Boat

|                     |                    |
|---------------------|--------------------|
| Length              | -55' ft            |
| Beam                | -16'7" ft          |
| Draught             | -6 ft              |
| Fish hold capacity  | -29 m <sup>3</sup> |
| Fuel                | -9,000 Ltrs        |
| Fresh water         | -2,500 Ltrs        |
| Recomunended Engine | -250-350 Hp        |
| Speed               | -08-10 Knots       |

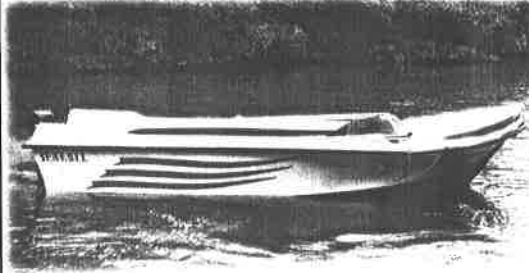
ජාත්‍යන්තර සහතික ලත් ධීවර යානා, මහලු ප්‍රවාහන යානා, විකේද යානා හිමිපාදකයෝ සහ හයිලෝන් මාළු දැල් අලෙවිකරුවෝ  
படகுகள், கண்டியிழைத் தயாரிப்புகள் (குடைநசபடயளள) உற்பத்தியளர்களும் மற்றும் மீன்பிடி வலைகள்,  
கிரிக்கட் பயிற்சி வலைகள், மீன்பிடி உபகரணங்கள் விநியோகஸ்தர்களும்  
Manufactures of Boats, Fiberglass products and distributors of Fishnet, Cricket practice nets  
& Fishing gears.



24' சிவந்த காலாதி / கர்த்திசுத் தரகிச காலாதி  
உலாசப் படகு.  
Leisure Boat/Whale Watching Boat



3'6" x 3' x 7'6"  
சுலகி உலகிசுசு (கலி சிசுட் க: சிசுட்)  
Mobile Toilet  
(Single, Double and Triple)



18.5', 19.5' சிசுசுசு சிசுசு கலிசுசு காலாதி  
தட்டை அடி படகு.  
Flat bottom Boat

7' x 6' x 5'  
ஊர்சுசுசு கலி  
பாதுகாப்பு அரை.  
Security Hut

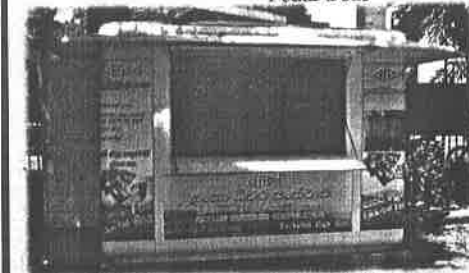


7'6", 5' x 2' சாசுசு கலிசுசு  
மிசுசுசு இயங்கும் படகு.  
Pedal Boat

**BOSTAN WHALE BOAT**



|                    |               |
|--------------------|---------------|
| Length             | - 13'5"       |
| Beam               | - 5' - 6'     |
| Draft              | - 0-6'        |
| Recommended Engine | - 15hp x 40hp |

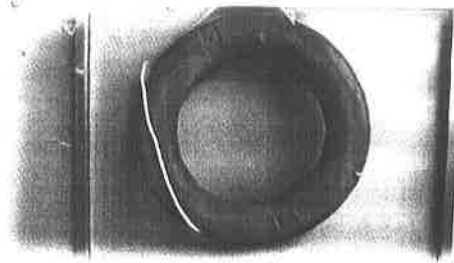


6' x 3' x 6 1/2' சாசுசு கலி சாசுசுசு சிசு சிசு சிசுசு சிசுசு சிசுசு  
மீன் கடை.  
Fish Stall

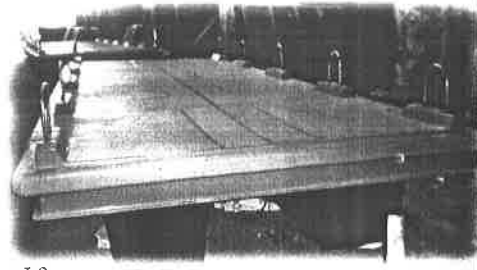


**34' & 36'**

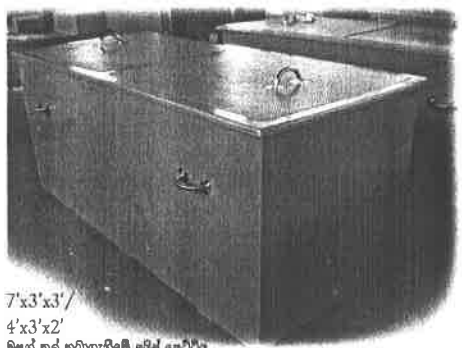
சிசுசுசு : சிசுசுசுசு கலிசுசுசு கலிசுசுசு  
வள்ளம் : களமடிய, உடப்பு வகை.  
Wallam : Type of Kalametiya & udappuwa



Life Ring



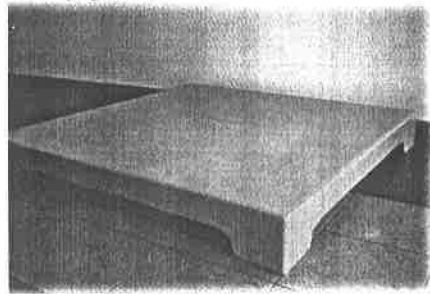
6.2m x 1.9m  
 தாவிரை கட்டிடம்.  
 அகலமும் தூண்.  
 Floating pier.



7'x3'x3' /  
 4'x3'x2'  
 மீன் தாது வகையில் அமைக்கப்பட்ட  
 மீன் சேமிக்கும் பெட்டி.  
 Fish keeping ice Box



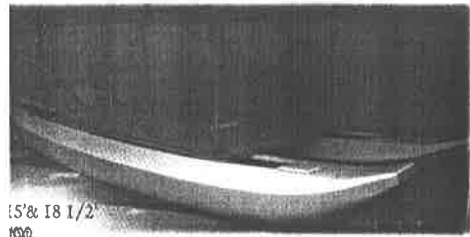
|                  |        |         |
|------------------|--------|---------|
| தாவிரை கிப்பி    | Lenght | -36'    |
| வீட்டுப் படகும். | Width  | -18'    |
| House Boat.      | Height | -12'    |
|                  | Room   | -12'x8' |



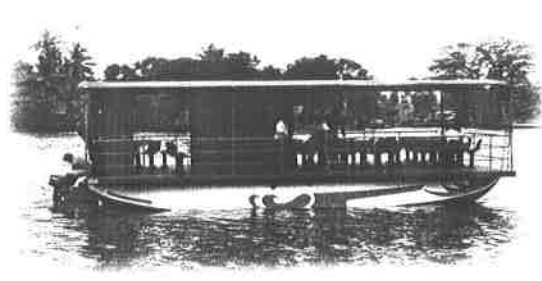
அலகு  
 தூண்டுபட்டி.  
 Pellet



தாவிரை மீன் தாது அலகு கட்டிடம்.  
 மீன் தாது அலகு  
 கட்டிடம் அல்லது மீன் தாது  
 கட்டிடம் கட்டிடம் அல்லது  
 மீன் தாது, மீன் தாது வகையில் மீன்  
 தாது கட்டிடம் பெட்டி.  
 Fish Box for Bicycle and Morter Bicycle.  
 With Lid and Withour Lid.  
 With Scale Holder and Without Scale Holder.  
 With isulated and Without isulated.



15'x 18 1/2'  
 மீன் தாது  
 அலகு.  
 Ferry.



36'x18'  
 ආවේන අවිහල  
 மிதக்கும் உணவகம்  
 Floating Restaurant



13', 15', 15 1/2', 18 1/2', මරලිය මරු සහ  
 18 1/2', 21' මුහුදු මරු  
 13', 15', 15 1/2', 18 1/2', குளம், ஆறு, ஏறி மற்றும்  
 18 1/2', 21' கடல் செல்லும் வள்ளம்  
 13', 15', 15 1/2', 18 1/2', Inland Canoes  
 and 18 1/2', 21' Sea Canoes



42' බහු දින කාණුව.  
 அடி பல நாள் படகு  
 Multy day Boat

Length -42'ft  
 Beam -13'ft  
 Draught 3'9"ft  
 Fish hold capacity -16.5 m<sup>3</sup>  
 Fuel -4500 Ltrs  
 Fresh water -1500 Ltrs  
 Recommended Engine -60-100 Hp  
 Speed -7-8.5 Knots



32' බහු දින කාණුව.  
 அடி பல நாள் படகு  
 Multy day Boat

Length -32'ft  
 Beam -10'2"ft  
 Draught -3'10"ft  
 Displacement -6 Tone  
 Fish hold capacity -6.7 m<sup>3</sup>  
 Fuel -1200 Ltrs  
 Fresh water -350 Ltrs  
 Recommended Engine -40-70 Hp

සීමාසහිත සී-නෝර් පදනම අංක 335, ඩී. අර්. විජේවර්ධන මාවත, කොළඹ 10.  
 දුරකථන : 0112448040  
 வரையறுக்கப்பட்ட சீநோர் நிறுவனம் 335 டி ஆர் விஜேவர்தன மாவத்தை கொழும்பு - 10  
 தொலைபேசி - 011 2448040  
 335, D. R. Wijewardana mawatha, Colombo 10.  
**HOT LINE : 0112 448040**  
 Email : ramanayaka@ceynor.com/info@ceynor.com Web : www.ceynor.com

## **HISTORY OF THE COMPANY**

Cey Nor Foundation Limited was incorporated as a Public Liability Company on 17 January 1990 to take over and carry on business of the Government Owned Business Undertaking of Cey Nor Development Foundation Limited, under the Conversion of Public Corporations or Government Owned Business Undertaking into Public Companies Act No. 23 of 1987.

Cey Nor Development Foundation began operations in 1967 as a non-profit organization dedicated to enhancing education and welfare of the domestic fishing community.

Over the years, the organization has undergone several transformations as summarized below:

**1967** – Cey - Nor Development Foundation was created and began operations, utilizing the aids received from NORGES GODTEMPLAR UNGDOMS FORBUND (NGU) a Norwegian Non-Governmental Organization

**1971** – Incorporated under the Companies Ordinance No. 51 of 1938 as a Public Company Limited by guarantee and was known as Cey Nor Development Foundation Limited

**1985** – Acquired by the Government of Sri Lanka under the Business Acquisition Act No: 38 and became the GOBU of Cey Nor Development Foundation Limited

**1990** – The GOBU of Cey – Nor Development Foundation ceased to exist with the application of the conversion of Public Corporations or GOBU Companies Act No. 23 of 1987

Cey Nor Foundation Limited was incorporated under the Companies Act No. 17 of 1982, to succeed the former GOBU of Cey Nor Development Foundation Limited

The entire share capital of this new company (Rs. 40,000,000.00) has been allotted to the Secretary of the Government Treasury.

**2011** – According to a policy decision taken by government and with the approval of the Cabinet of Ministers, two fishnet factories at Lunuwila and Weerawila which were operated under Cey Nor Foundation Limited were handed over to Northsea Limited, which functions under Ministry of Traditional Industries and Small Enterprises Development, with effect from 1<sup>st</sup> November 2011

As per MOU signed between Cey Nor Foundation Limited and Northsea Limited, Cey Nor Foundation has been vested with the authority of being the sole Agent for sales of fishnet manufactured at Weerawila and Lunuwila Factories.

## **VISION**

To be a market – leader in building of fishing and leisure craft and supply of fishnet and fishing gear in Sri Lanka and be an internationally recognized boat builder.

## **MISSION**

Operating as an efficient and effective government owned company which supplies high standard fishing craft and fishing gear to clients at competitive prices.



## OBJECTIVES

- ★ To become a recognized exporter of fiberglass boats
- ★ To become a fiberglass boat builder of international repute
- ★ To be an investor in foreign lands in fiberglass boat building sector
- ★ To be an effective contributor to the development of Fishing Industry in Sri Lanka by supplying high – quality products, namely fishing boats & fishing gear
- ★ To be a provider of excellent customer services

## CORPORATION INFORMATION

|                     |   |   |
|---------------------|---|---|
| Name of the Company | : | Cey Nor Foundation Limited  |
| Legal Form          | : | Limited Liability Company incorporated in Sri Lanka Under the Companies Act No: 17 of 1982 and subsequently under the Companies Act No: 7 of 2007 |
| Registered Office   | : | 335, D. R. Wijewardhana Mawatha, Colombo 10   |

### Directors

|                               |   |                   |
|-------------------------------|---|-------------------|
| Mr. B. K. Jagath Perera       | – | Chairman          |
| Mr. R. L. A. D. Mens          | – | Managing Director |
| Mr. K. A. S. S. K. Perea      | – | Director          |
| Mr. H. L. Thisera             | – | Director          |
| Mr. C. R. Munaweera           | – | Director          |
| Lawyer L. M. K. Muthukumarana | – | Director          |

|                   |   |   |
|-------------------|---|---|
| Company Secretary | : | Ananda Sirisena & Company   |
| Auditors          | : | Auditor General's Department<br>No 306/72, Poldoowa Road,<br>Baththaramulla |
| Bankers           | : | Bank of Ceylon<br>Hatton National Bank<br>Peoples Bank                      |
| Factory           | : | Mattakkuliya Boatyard   |

### Our Overseas Clients

- |   |  |
|---|--|
| 01. Mr. Guled Ahmed<br>PO 5950<br>Puntland State Somalia                                      | 03. Mr. Ahamed Omar Ahmed<br>Harbo Fish and Canning Factory<br>Somalia |
| 02. Mrs. Virgine Mussard<br>Avenue Des Marsevins<br>Morecellent De Chaged Ablbion<br>Mauridus |  |